

# one.network: Route Manager

Create, adjust and manage transport routes in real-time with our Route Manager module.



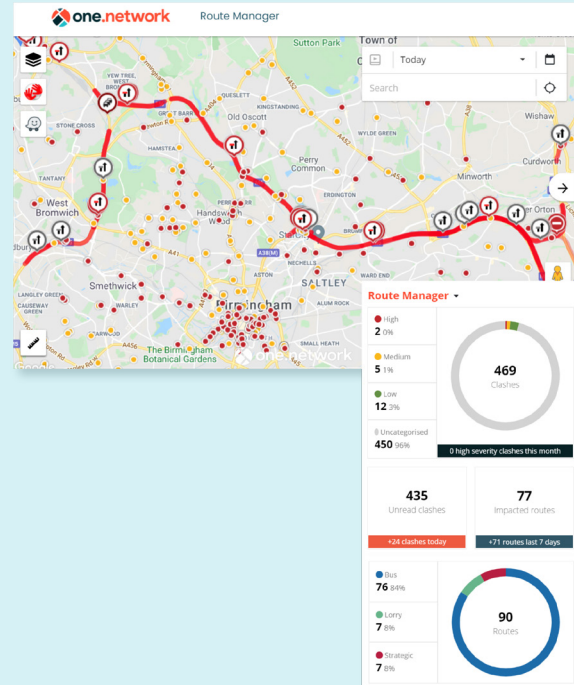
## Automatically detect and avoid clashes between works and your routes

Route Manager lets users plan and manage bus routes in real-time, with complete visibility of changes and their effect on traffic flow.

It's the ideal solution for connecting highway authorities and transport operators.

Interested in a test drive?

[Get in touch](#)



Route Manager dashboard and metrics.

## Protect your transport routes



### Improve journey time reliability

Understand the interactions between roadworks and transport routes to get more accurate info on journey times, elevating passenger experience.



### Reduce manual monitoring time

Automatic clash detection saves time monitoring routes and roadworks.



### Evidence improvements

Evidence changes made to bus routes, providing accessible proof of improvements and progress.

## Plan, communicate and analyse every road event

### Requirements:

- Part of our Planning and Coordination package.
- Requires a subscription to either our Essentials or Professional package.

# one.network: Route Manager

Create, adjust and manage transport routes in real-time with our Route Manager module.



## How it helps

Route Manager helps protect your transport routes and keep your services on track by automatically detecting clashes between works on the road network and your routes. Users can plan and manage bus routes in real-time, with complete visibility of changes and their effect on traffic flow.

With Route Manager, users can:

- **Improve** journey time reliability with more accurate information on journey times, allowing for an elevated passenger experience.
- **Reduce** manual monitoring time with automatic clash detection between routes and roadworks.
- **Evidence** changes and improvements made to bus routes, providing accessible proof of improvements and progress.

## Features



- Clash dashboard which displays all current and upcoming works on a live map, highlighting which routes might be impacted.
- Automatic alerts feature to notify users when a route is being affected.
- Route planner and automatic document generation for creation and management of bus routes, including diversions.
- Option to embed a map of your bus routes into your website.
- An optional Route Manager Data API to update your systems and passenger information websites.

Plan, communicate and analyse every road event

### Requirements:

- Part of our Planning and Coordination package.
- Requires a subscription to either our Essentials or Professional package.