

one.network – Covid response features

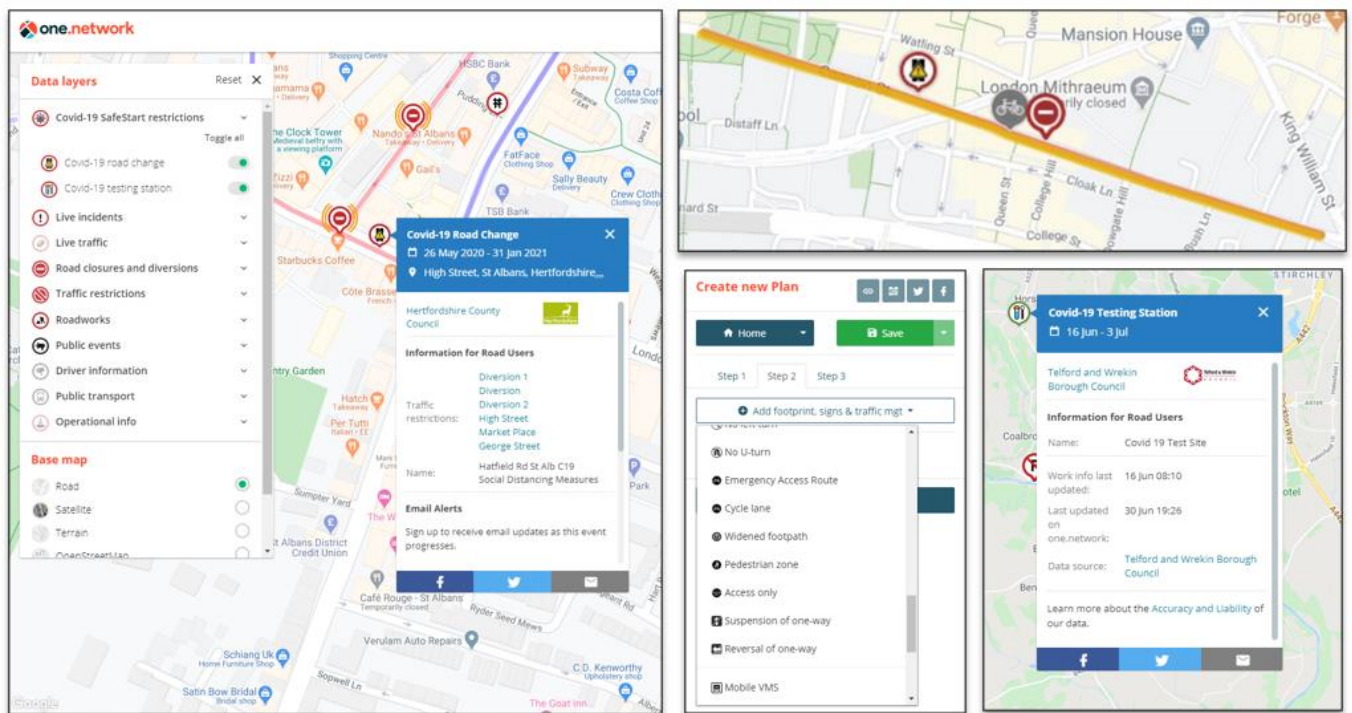
Plot, coordinate and communicate Covid response plans.

New Traffic Management Covid response functionality

The Traffic Management module is already used by nearly 100 local authorities to coordinate and plan network disruptions, providing the foundation for stakeholder collaboration and public communication.

Elgin has made several changes to support Covid response initiatives, including the ability to plan and communicate new measures to deliver spaces for people and protect key services, including:

- Cycle lanes (permanent and pop-up)
- Pedestrian zones and widened footpath
- Covid-19 testing stations
- NHS emergency access routes
- Covid-19 social distancing signage for traffic management plans



Under a special arrangement with HAUC UK, Elgin has waived charges for Covid-related usage to non-subscribers of the Traffic Management module in order to facilitate the rapid sharing of data during this critical period.

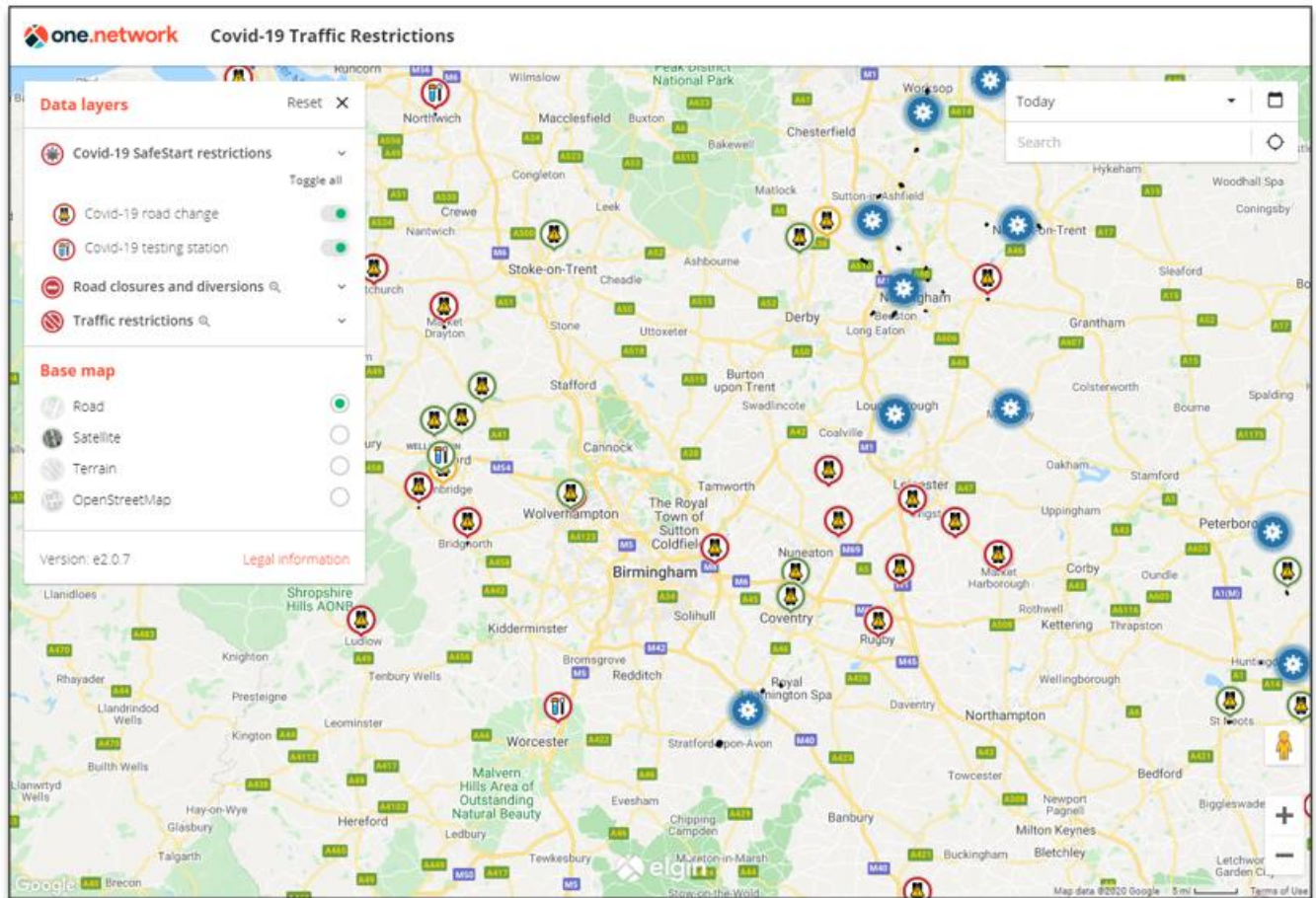
Clash detection for Covid works

Other changes coming shortly to one.network will enable authorities to minimise the impact on critical services. A new Clash and Coordination module is in development which will automatically pick up potential conflicts between works and facilities deemed to be vital to local communities during the restart, including A&E departments, hospitals, Covid testing facilities, chemists – even bike shops.



Covid-specific embedded map

A localised map of Covid-specific measures is also now available to embed into websites, enabling clear communication to residents of social distancing response plans. The national version of this map can be seen [here](#).



Live communication to sat-nav and mapping services

The DfT, JAG UK and the Highways Sector Council have set out "Golden Covid-19 Rules", advocating rigorous programming and planning and wherever possible providing live updates to traffic interventions to sat-nav and mapping services such as Google – a capability that can be uniquely met by the one.network Live Link app. More information [here](#).

More information

For more information and for access to the Traffic Management module, please contact info@elgintech.com.