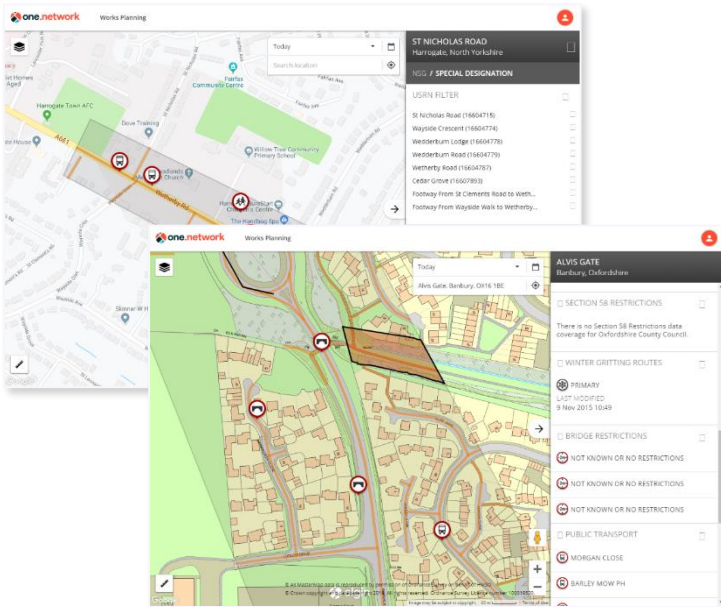


Works Planning

Map based streetworks planning tool enabling risk assessment of works sites to reduce aborted works and other planning failures.



Reducing the cost of failure

Our Works Planning module enables streetworks teams to rapidly risk assess works sites early in the planning process prior to visiting site, enabling better decisions to be made around scheduling, permitting and safety.

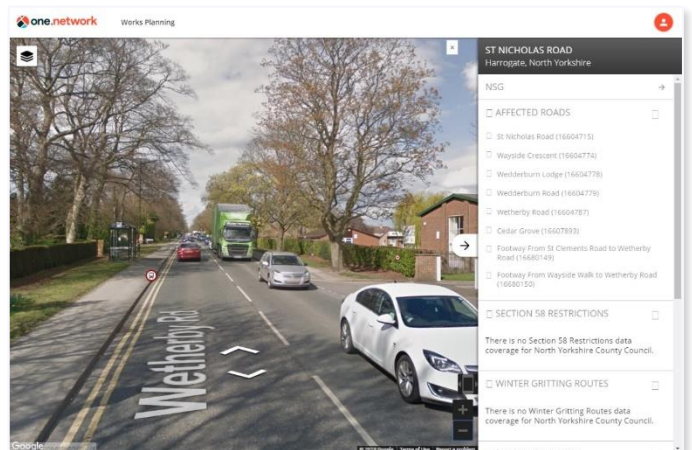
The tool supports a rapid “desktop risk assessment” of work sites in order to identify common issues affecting the viability, cost, timing and safety considerations involved in completing the job.

Works Planning brings together crucial planning datasets under one roof,

including built environment such as bus stops, bridges and structures and height, weight and width restrictions; compliance information such as Section 58s, the NSG and speed limit data; proximity factors such as schools, hospitals and fire stations; all of which is underpinned by OS MasterMap™ detailed base mapping.

Features & benefits

- Reduce aborts, re-plans, overruns, temporary reinstatements, traffic management compliance failures and FPNs through better planning early in the process.
- Standardise planning processes across teams resulting in a clear planning procedure and better mitigation of health and safety risks where issues on works sites can be identified in advance of the first site visit.
- Reduce site surveys, surveyors and supervisor time.
- Reduce customer/reputational risks by identifying potential issues before teams are on site.
- Integrates with works management systems such as SAP.



If you would like to know more about Works Planning module and arrange a demo, please contact us.