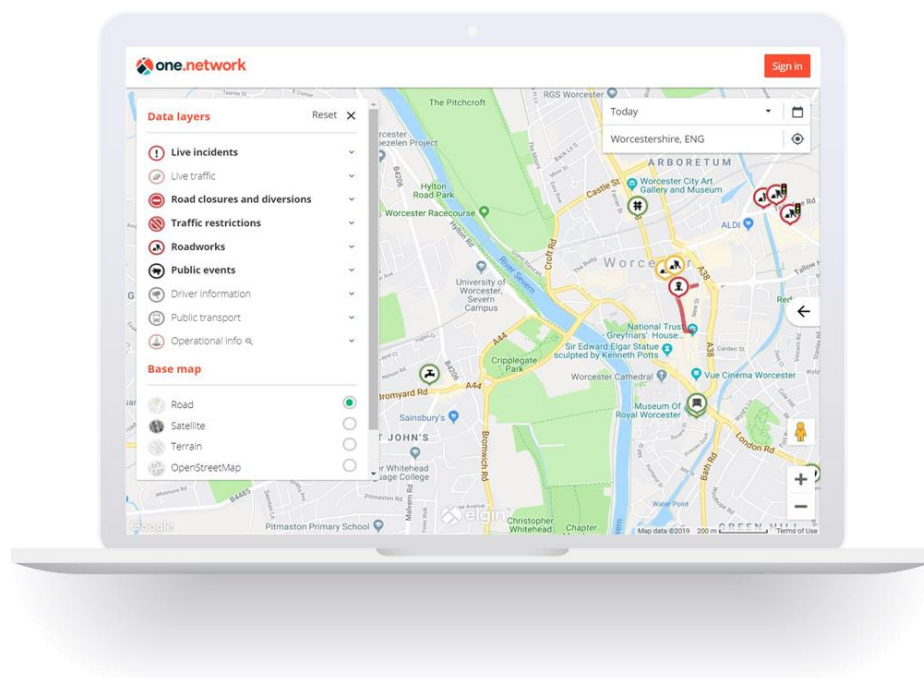


one.network Map

UK-wide map of current, planned and historical roadworks, events and traffic management interventions.

Single source of truth

The one.network Map is the UK's single source of truth for information about traffic disruptions, displaying comprehensive information about current and planned roadworks, public events and traffic management interventions such as road closures and diversion routes.



User friendly and free-to-view, one.network is the one of the most visited, most comprehensive and most widely syndicated source of roadworks and traffic disruption information in the UK.

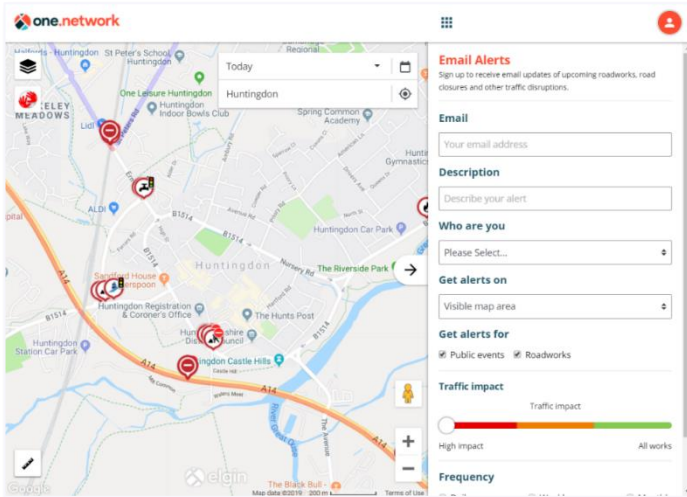
Use cases

- one.network Map enables highway authorities to fulfil their duty to communicate authoritative up-to-date information about roadworks, events and other activities on the highway.
- It is the national stakeholder engagement channel through which utility companies, contractors, bus operators and emergency services rely on for information about works.
- Users can register for email alerts about upcoming roadworks affecting their area. This is particularly useful for local councillors and others with public information duties to fulfil.



One map - many uses

one.network Map is the foundation of our platform and we offer a range of configuration options to optimise it for use by our customers.



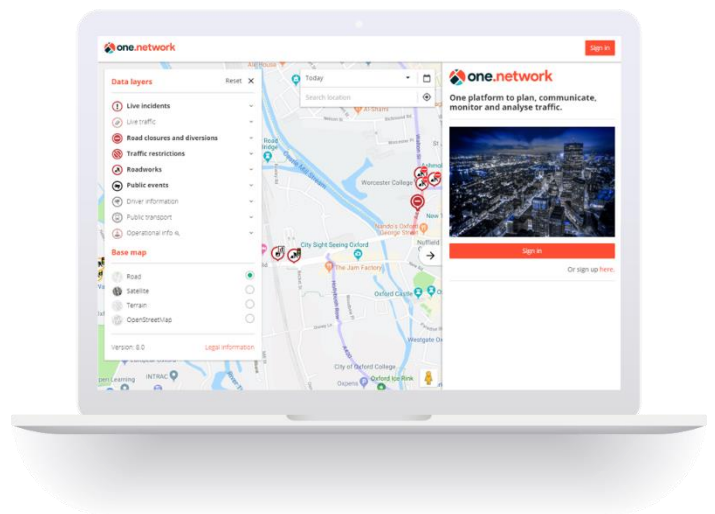
It can be embedded into your organisation's website and enhanced with public friendly language overcoming the "engineering jargon" nature of roadworks information using our Content Management module.

Live feeds such as traffic cameras and real-time parking availability, public transport and over 30 additional data layers can be added to the map. We even have comprehensive information about historical roadworks and traffic management that can be searched and interrogated via the map.

Where does the data come from?

Elgin collects data from local and national highway authority roadworks systems, DfT Street Manager and numerous urban traffic management control systems.

Authorities also contribute precise information about events, road closures, diversion routes and other traffic management interventions using our Traffic Management module. All of this is brought together reflecting the latest status of traffic disruptions in one central location: one.network.



If you would like to know more about how the one.network Map can be used within your organisation, please contact us.